



# KEWEENAW

## COUNTY HISTORICAL SOCIETY



*Life Saving Station Volunteers Mark Rowe and Jim Huovinen  
Hanging the Life Saving Service Motto following the Wall Expansion Construction*

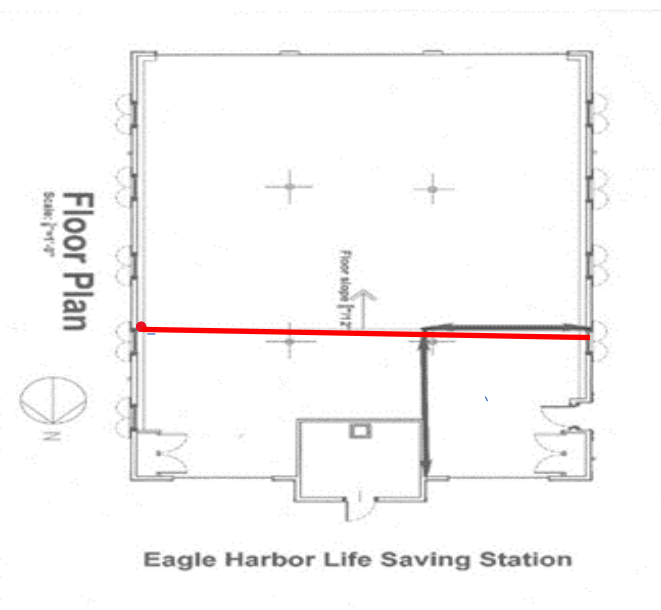
### **“Expanding & Securing Life Saving Station Museum’s Visitors’ Viewing Area & Exhibits”**

The project funded by a 2022 Heritage Grant supported the Keweenaw County Historical Society’s (KCHS) efforts to make improvements to the Eagle Harbor Life Saving Station Museum. Specifically, the project’s goals were to expand the wall that separates the rescue boats and related equipment from the rest of the museum to increase the visitors’ view of the boats and equipment and also to install an electronic door with a timed locking system. Robert E. Johnson Contracting, Inc, 56043 Traprock Valley Road, Lake Linden, Michigan completed the construction project, aided by KCHS volunteer labor. In order to not interrupt the visitors’ access to the museum, the construction project started after the close of the season on October 10, 2022 and it was completed in March, 2023 prior to the opening of the 2023 visitor season. The new wall was constructed in 2022 and installation of the electronic door lock, plus finishing touches of the wall project, such as painting, were done in 2023.

Previously, the viewing area for visitors was limited to a space of 14 ft. x 25 ft and the boats, equipment and interpretive exhibit boards were seen through a plexiglass-paneled wall. The viewing wall now is expanded to the full width of the boathouse with cable wire added to the wall openings. This provides visitors with an unobstructed view and better photographic opportunities. On the other side of the wall there is now more space in that area of the boathouse for exhibits, including display boards.

Pictures and captions will show the improvements and capture the work completed by Johnson Contracting and KCHS volunteers. The proposed budget, information on the actual expenditures and the Johnson Contracting invoice, which was paid by KCHS, are at the end of this report.

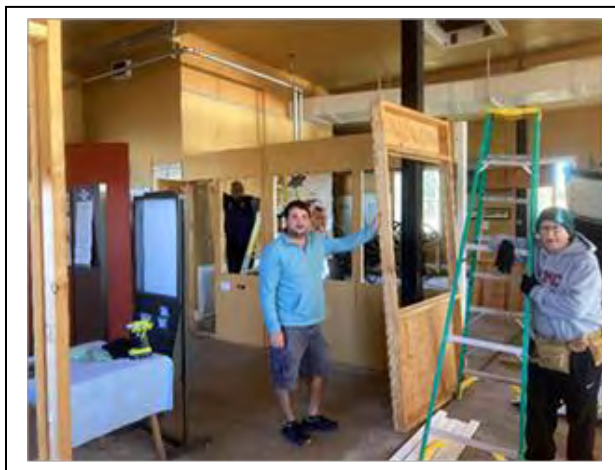
**Before Construction** the museum had a smaller viewing and exhibit area.



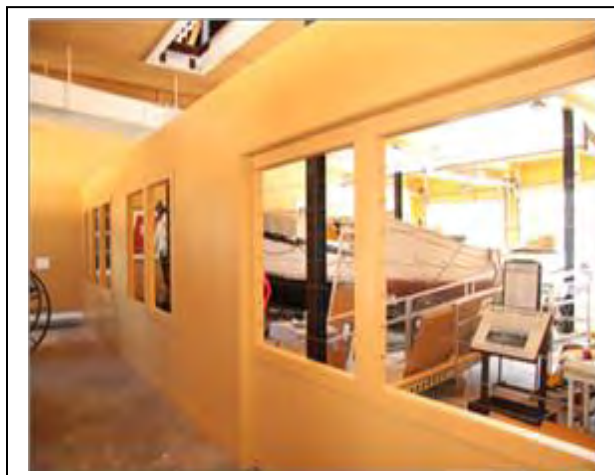
The **black line** in the floor plan of the Eagle Harbor Life Saving Station is the walled area BEFORE improvements.

The **red line** shows the viewing wall location AFTER the construction project was completed.

**Demolition** - Removal of existing wall was done by volunteers--  
Kyle Cinelli and Jim Huovinen (left picture) and Dave Pehoda, Jr (right picture)



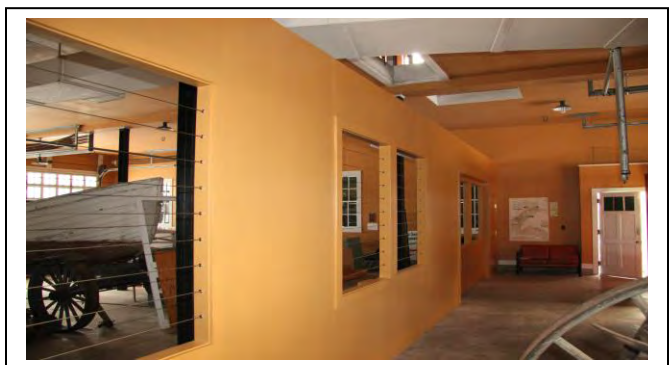
**Wall Construction Pictures:** Johnson Contracting framed a new interior wall with some sections built in 4-foot lengths so that they can be removed for access to the boats and equipment.



This is the completed view of the viewing wall across the full length of the boathouse



Expanded Display Area Opposite Viewing Wall



Expanded View of Surfboats

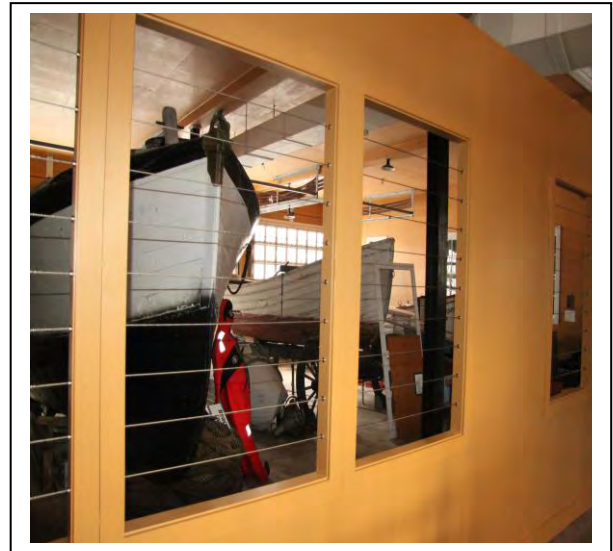


## Cable Wire System was installed in the Wall Openings

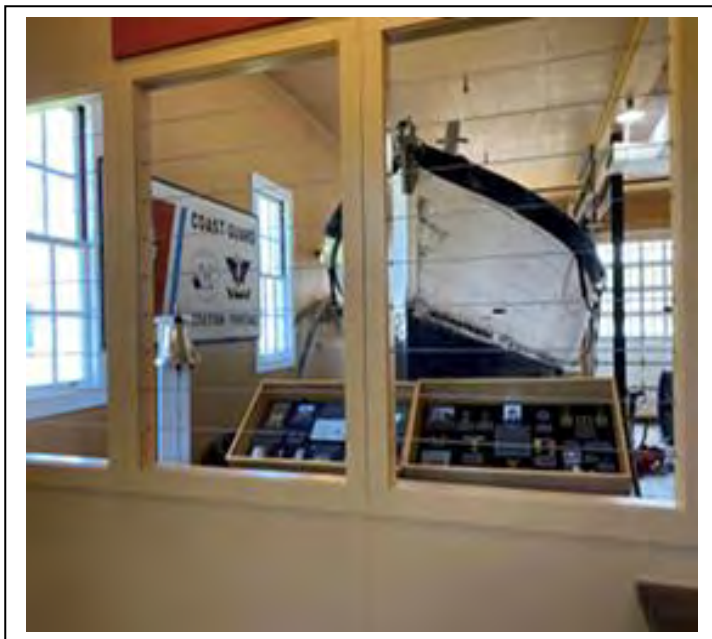
The original plan for installing safety plate glass in the wall openings was changed to a cable wire system because Joe Johnson and Mark Rowe determined it was the best option for optimal visitors' viewing.



Beginning of the construction of the wire system.



Finished opening within new wall



Full view of boats and exhibits



Close-up picture taken of Glaza exhibit through wall opening

**Man Door** was designed to blend in with the wall & built to provide KCHS volunteers with access to exhibits.



**Sliding Barn Door** was built to allow KCHS volunteers with access to boat storage area.

